

Model: Model C- P1 Duplex Unit (G361)		Date: 7-Dec-04	No.: MG361001
Modified Article: Environmental Considerations		Prepared by: A. Ishiyama	
From: 1st Technical Support Sec. Service Support Dept.			
Reason for Modification:	<input type="checkbox"/> Parts catalog correction <input type="checkbox"/> To facilitate assembly <input type="checkbox"/> Part standardization	<input type="checkbox"/> Vendor change <input type="checkbox"/> To improve reliability <input checked="" type="checkbox"/> Other	<input type="checkbox"/> To meet standards ( )
Modification Schedule:	From September '04 production		

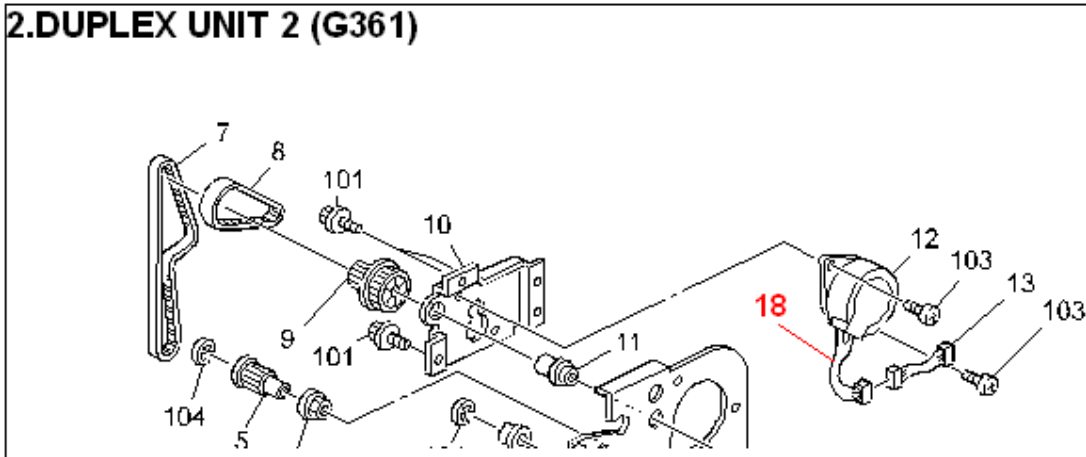
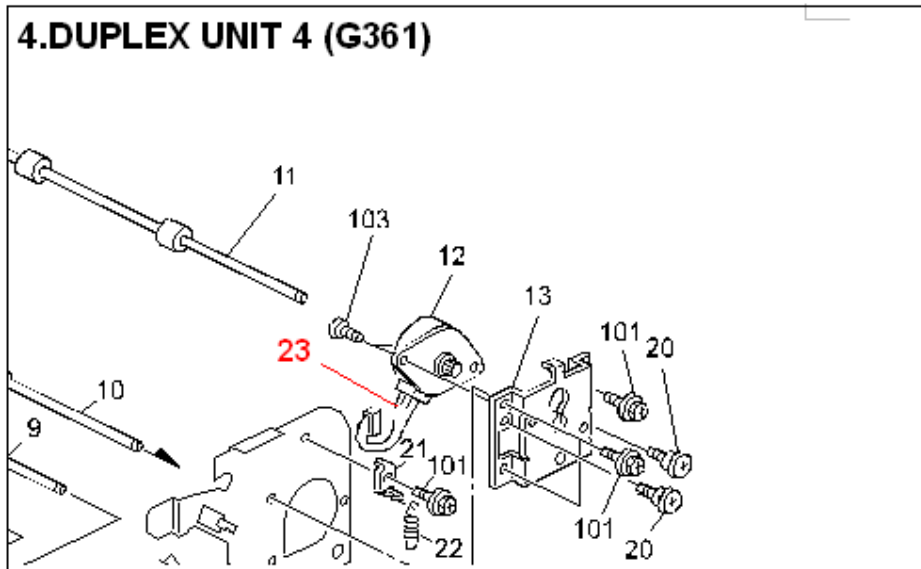
Old part number	New part number	Description	Q'ty	Int	Page	Index	Note
[Motor]							
C4085700		Stepper Motor DC24V	2→2	X/O	5, 9	12, 12	
	→ AX040216	Stepper Motor MM42: UD2A					
	→ G3925330	Harness – Motor	0→2	-/-	5, 9	18, 23	
[PCB]							
G3615100		PCB Ass'y	1→1	X/O	7	10	
	→ G3615110	PCB – Duplex : P2					
[Photointerruptor]							
G5527050	G3615570	Photointerruptor	2→2	X/O	7	12	
[Solenoid]							
G5527153	G3615560	DC Solenoid Ass'y	1→1	X/O	7	20	
[Lever]							
G5527399	G8064650	Rear Lever	1→1	X/O	9	2	
[Bracket]							
G3612760	G3612761	Feed Paper Again Motor Bracket	1→1	X/O	9	13	
G5527039	G8064645	Upper Sensor Bracket	1→1	X/O	7	13	
[Screws]							
AA143716	AA143820	Stepped Screw	1→1	X/O	7	16	
G0044635	AA143821	Stepped Screw – M3	2→2	X/O	7	23	
G0124617	AA143544	Screw – M3	1→1	X/O	9	19	
G0487152	AA143822	Stepped Screw – M3.5	2→2	X/O	9	20	

**Change/Reason:** The material used in these parts (chromium) was changed to a non-toxic type.

Model: Model C- P1 Duplex Unit (G361)

Date: 7-Dec-04

No.: MG361001

**[G3925330: 5-18]****2.DUPLEX UNIT 2 (G361)****[G3925330: 9-23]****4.DUPLEX UNIT 4 (G361)**

Model: Model C- P1 Duplex Feed Unit (G361)	Date: 7-Dec-04	No.: MG361002
--	----------------	---------------

Modified Article: Environmental Considerations Part 2		Prepared by: A. Ishiyama	
From: 1st Technical Support Sec. Service Support Dept.			
Reason for Modification:	<input type="checkbox"/> Parts catalog correction <input type="checkbox"/> To facilitate assembly <input type="checkbox"/> Part standardization	<input type="checkbox"/> Vendor change <input type="checkbox"/> To improve reliability <input checked="" type="checkbox"/> Other	<input type="checkbox"/> To meet standards (      )
Modification Schedule:	From December '04 production		

Old part number	New part number	Description	Q'ty	Int	Page	Index	Note
[Roller]							
G3612570	G3612571	Transport Roller	3→3	X/O	5	14	
G3612710	G3612711	Feed Paper Again Transport Roller	1→1	X/O	9	11	
G3612780	G3612781	Horizontal Drive Transport Roller	1→1	X/O	9	10	
G3612790	G3612791	Horizontal Transport Roller	2→2	X/O	9	9	

**Change/Reason:** The material used in these parts (cadmium) was changed to a non-toxic type.